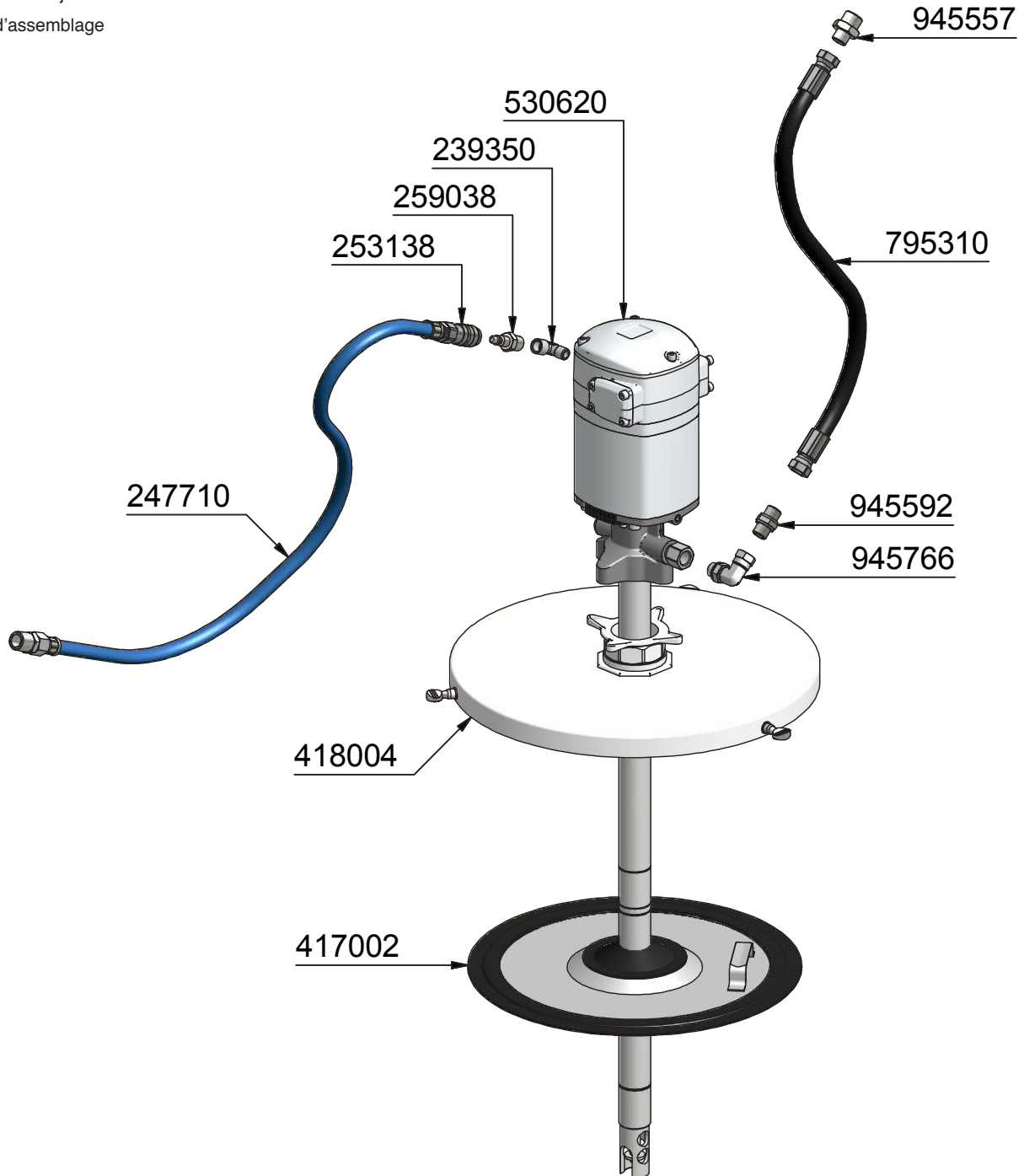


Assembly guide  
Guía de montaje  
Guide d'assemblage



2019\_11\_07-10:00

**EN** 60:1 PM35 PUMP KIT - 50 KG DRUM

**ES** KIT BOMBA PM35 - 60:1 BIDÓN 50 KG

**FR** KIT POMPE PM35 - 60:1 TAMBOUR 50 KG